

Full spectrum lighting for dental practices

Reduce eye strain and fatigue; use correct lighting in your dental practice.

DentLed Full Daylight Spectrum Lighting system is designed to meet the specific requirements of dental professionals, resulting in reduced fatigue and eye-strain and vastly improved ergonomics.

Product family: DLL Dental Light Line

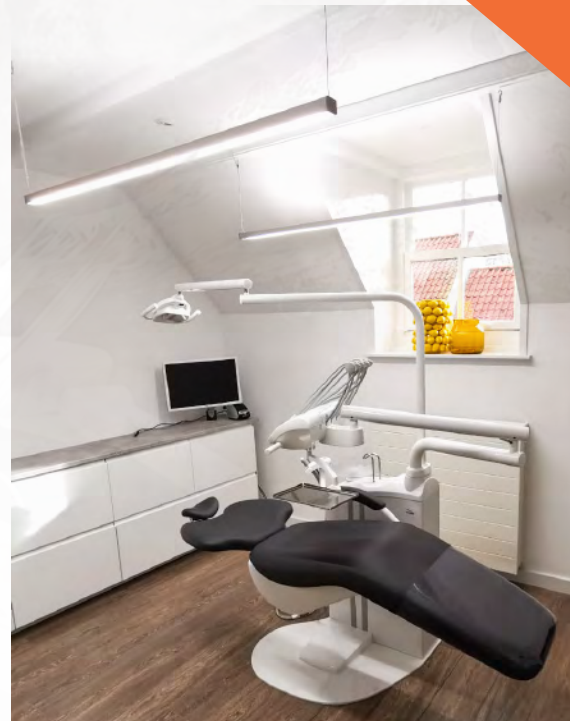
Narrow profile bi-directional full Spectrum lighting for dental treatment rooms.



The 35 mm wide profile of the DLL range of Dental linear lamps are perfect for treatment rooms where design and aesthetics play an important role. With many possible configurations and available in 1546 and 2246 mm, the DLL range of dental lighting combine form and function. DLL lamps are bidirectional, meaning that they emit light both from the top and the bottom, creating an even spread of light throughout the treatment room.

Key features and benefits

- CRI - Colour rendering index of 90+ or 97+ for accurate shade matching
- Flicker free drivers – no fatigue inducing visible or invisible flicker
- Direct / indirect lighting for an even distribution of lighting throughout the treatment room.
- Low glare, the light is not perceived as harsh or unpleasant.
- High output - 1500–2000 lux at the oral cavity.



High colour rendering for correct shade matching



Reduce eye strain / tired eyes; install correct lighting.



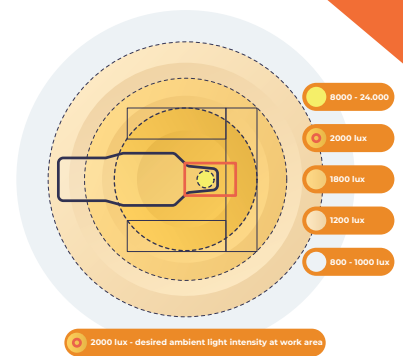
DLL is available in black and white

Installation

Due to the adjustable position of the suspension points, existing installation points can often be used. The installation process is straightforward as both LED's and the driver are integrated into the lamps. Any electrician can perform the technical installation

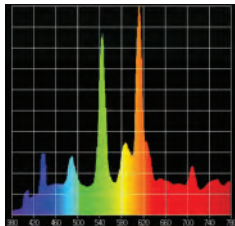
Advantages of full spectrum lighting:

- Higher brightness without glare or being harsh on the eyes.
 - Full spectrum lighting spreads the output across the visible spectrum. The light is bright, but not harsh or blinding.
- Accurate Colour rendering
 - Accurate colour rendering is important for diagnosis of gum diseases, infections and shade matching.
- Circadian rhythm:
 - Dental workers spend a lot of time indoors, full spectrum lighting at the correct intensity stimulates the natural hormonal cycle which stimulates the allows the dental worker to be awake and focussed when required.
- Increased sharpness and improved overall vision.

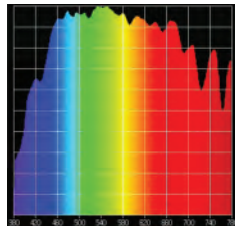


Correct light intensity distribution in a dental treatment room

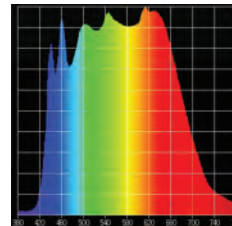
Spectrum comparison



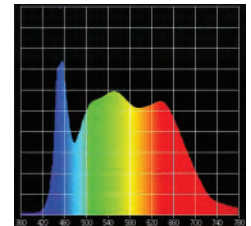
Tube / Fluorescent light



Daylight sunny day



DentLed full spectrum light



DentLed cri90+ full

Technical specifications

	2xDLL15HE	2xDLL15FS	2xDLL22HE	2xDLL22FS
Output (lumen)	2 x 7101 lm	2 x 4842 lm	2 x 10482 lm	2 x 7147 lm
CRI (colour rendering)	90+	97+	90+	97+
CCT (colour temp)	5000k	5000k	5000k	5000k
Efficiency (lm/watt)	109 lm/w	74 lm/w	109 lm/w	74 lm/w
Power cons. (watt)	2 x 66w	2 x 66w	2 x 97w	2 x 97w
Dimensions (mm)	1546x35x71	1546x35x71	2245x35x71	2245x35x71
Weight (kg)	2 x 3.1	2 x 3.1	2 x 4.3	2 x 4.3
Dimmable	upgrade / dali inc	upgrade / dali inc	upgrade / dali inc	upgrade / dali inc
Colours	black/white	black/white	black/white	black/white
Flicker Free	yes	yes	yes	yes
Lifetime (hrs / yrs)	100,000 / 40	100,000 / 40	100,000 / 40	100,000 / 40
Power connector	euro	euro	euro	euro
Power cord lngth (m)	2	2	2	2
Max Suspension (m)	1.5	1.5	1.5	1.5
direct/indirect	51%/49%	51%/49%	51%/49%	51%/49%
Suspension points	adjustable/rail	adjustable/rail	adjustable/rail	adjustable/rail

About DentLed

With full spectrum lighting **installed in over 1100 dental treatment rooms**, DentLed is the market leader for dental lighting in the Netherlands.

DentLed designs and builds full daylight spectrum lighting specifically for use in dental work; dental surgeries, practices.

Our offices

NL - Utrecht

Mariaplaats 3
3511LH Utrecht
+31 303 100 500

FR - Lyon

185 Rue Battaille
69008 Lyon
+33 428 770 170

DE - Dusseldorf

Beedstraße 54
40468 Düsseldorf
+49 211 869 430 03

We're here to help,
give us a call or email us:

+31 303 100 500

info@dentled.com